

# MP1200 WIRE EDM DRESSER MACHINE

---

The advantages of Metal Bonded (MB) wheels for grinding are well known. MB wheels have grown in popularity due to performance benefits when grinding. Until now, the difficulty in dressing these wheels has been a restriction in their use for many customers.

To overcome this problem and provide a solution to our customers, ANCA has partnered with Mitsubishi Electric Europe – the leader in Electrical Discharge Machining (EDM) dressing technology. ANCA is now an official distributor of Wire EDM machines in Europe, Africa and the Middle East regions. The MP1200 Wire EDM machine is unrivalled in the marketplace for dressing of MB wheels. Wire EDM provides an easier, faster, more accurate, and high performing dressing process for CBN and Diamond MB wheels.

MB wheels dressed using the MP1200 machine will provide significantly higher feedrates and hold form for longer while producing more tools on an ANCA tool and cutter grinder. This offers a huge advantage to the grinder in terms of cycle time and productivity. The accuracy of the wheels dressed using the EDM process also reduces the need for adjustments or compensations to get the produced tools in tolerance. The time saved, increase in grinding wheel performance and superior cutting tools will provide a quick return on investment.

# MP1200 WIRE EDM DRESSER MACHINE

When compared to conventional dressing, the MP1200 Wire EDM machine dresses wheels with an open porous structure and extended grit protrusion - allowing the wheel to cut aggressively freer and increase grinding performance.



## BENEFITS

### Fast Dressing

- Wire EDM Process can shape the wheel quicker than standard dressing
- Once set up, the machine does not need an operator to dress the wheels (saving money)

### Accurate Form

- Wire EDM process is non-contact
- Complex forms and profiles can be dressed easily

### Aggressive Wheels / Higher Feeds

- Only the bond is eroded, leaving the diamonds exposed (the diamond is not conductive and is not touched or deformed during the EDM dressing process)
- Lower spindle loads for the same MRR
- Grinding wheels dressed using the wire EDM process do not require sticking of the wheel on the grinding machine

### Longer Wheel Life

- Wheel life is improved as the bonded diamonds remain in place longer and more of the grits remain after dressing
- Wheels up to 250mm diameter can be dressed on the MP1200 machine

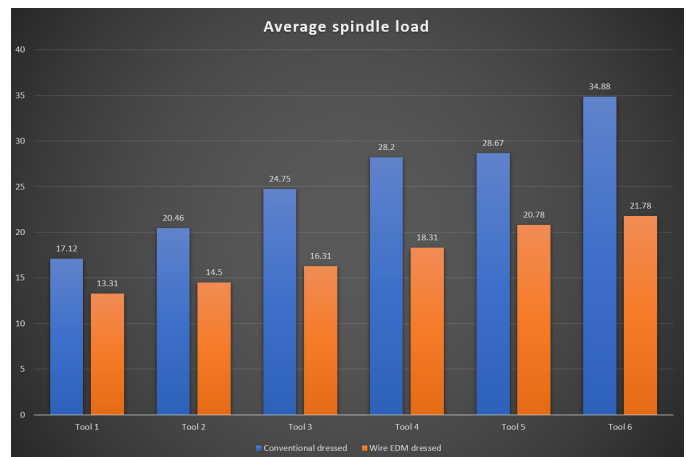
### MP1200 EDM machine extra capabilities

- To help justify the investment, the MP1200 machine can be used for machining of other parts and components

### EDM dress process advantages

- The process is clean – dressing is performed under water
- No dust or pollution -extraction is not required as with stand-alone dresser
- Environmentally friendly

For the Wire EDM dress process to work, the bond must be conductive. Resimet (hybrid bond of resin and metal) or any grinding wheel with metal in the bond can be Wire EDM dressed. When compared to conventional dressing, the MP1200 Wire EDM machine dresses wheels with an open porous structure and extended grit protrusion-allowing the wheel to cut aggressively freer and increase grinding performance.



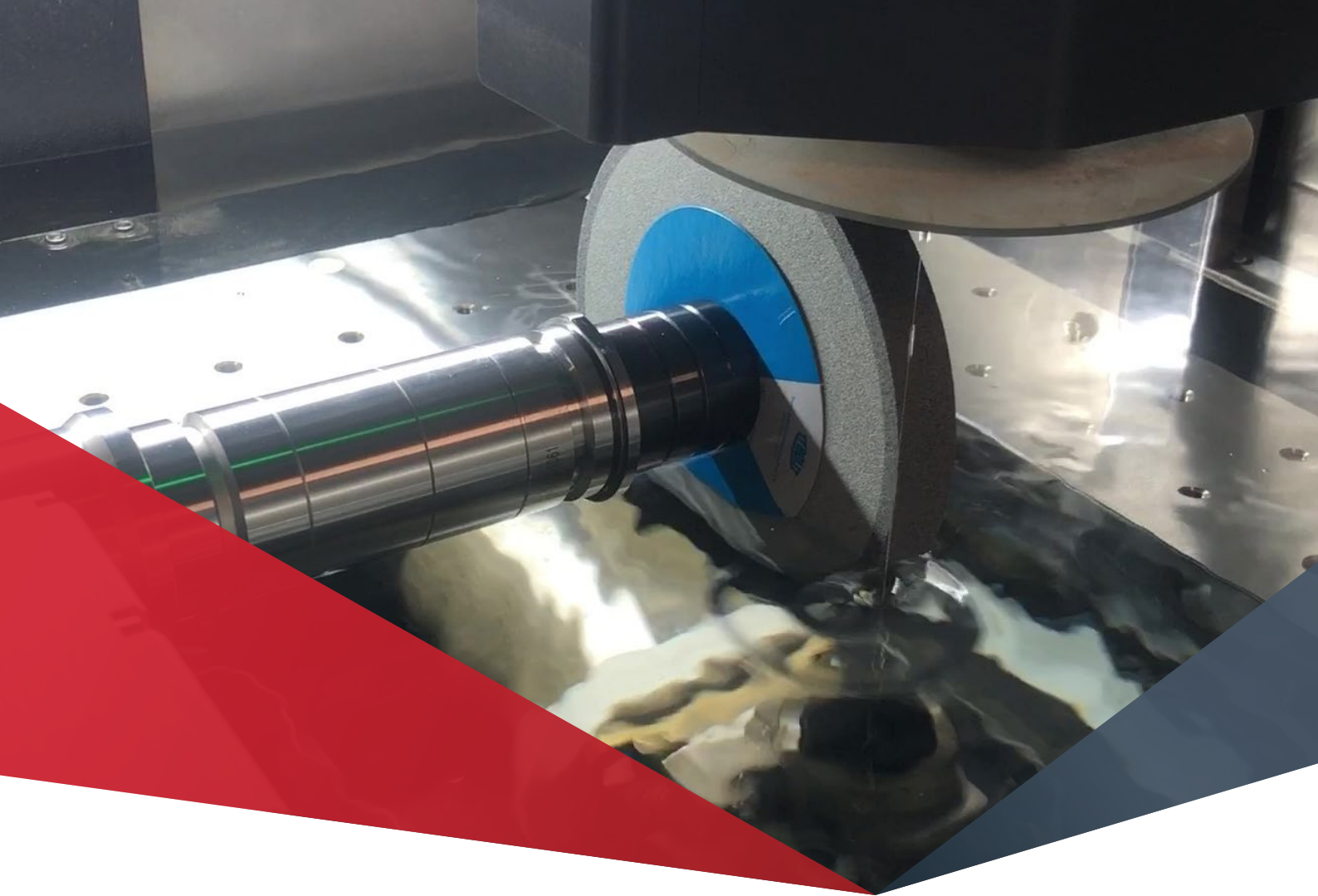
EDM dressed wheels use significantly lower spindle loads when grinding on ANCA machines



@ANCACNCMachines

[www.anca.com](http://www.anca.com)

**ANCA**  
CNC MACHINES



# MV1200 R WIRE EDM DRESSER MACHINE

---

The advantages of Metal Bonded (MB) wheels for grinding are well known. MB wheels have grown in popularity due to performance benefits when grinding. Until now, the difficulty in dressing these wheels has been a restriction in their use for many customers.

To overcome this problem and provide a solution to our customers, ANCA has partnered with Mitsubishi Electric Europe – the leader in Electrical Discharge Machining (EDM) dressing technology. ANCA is now an official distributor of Wire EDM machines in Europe, Africa and the Middle East regions. The MV1200 R Wire EDM machine is unrivalled in the marketplace for dressing of MB wheels. Wire EDM provides an easier, faster, more accurate, and high performing dressing process for CBN and Diamond MB wheels.

MB wheels dressed using the MV1200 R machine will provide significantly higher feedrates and hold form for longer while producing more tools on an ANCA tool and cutter grinder. This offers a huge advantage to the grinder in terms of cycle time and productivity. The accuracy of the wheels dressed using the EDM process also reduces the need for adjustments or compensations to get the produced tools in tolerance. The time saved, increase in grinding wheel performance and superior cutting tools will provide a quick return on investment.

**ANCA**  
CNC MACHINES

# MV1200 R WIRE EDM DRESSER MACHINE

When compared to conventional dressing, the MV1200 R Wire EDM machine dresses wheels with an open porous structure and extended grit protrusion - allowing the wheel to cut aggressively freer and increase grinding performance.



## BENEFITS

### Fast Dressing

- Wire EDM Process can shape the wheel quicker than standard dressing
- Once set up, the machine does not need an operator to dress the wheels (saving money)

### Accurate Form

- Wire EDM process is non-contact
- Complex forms and profiles can be dressed easily

### Aggressive Wheels / Higher Feeds

- Only the bond is eroded, leaving the diamonds exposed (the diamond is not conductive and is not touched or deformed during the EDM dressing process)
- Lower spindle loads for the same MRR
- Grinding wheels dressed using the wire EDM process do not require sticking of the wheel on the grinding machine

### Longer Wheel Life

- Wheel life is improved as the bonded diamonds remain in place longer and more of the grits remain after dressing
- Wheels up to 250mm diameter can be dressed on the MV1200 R machine

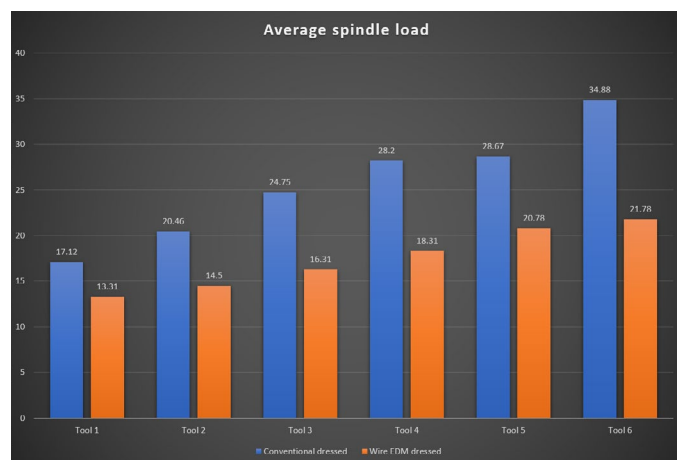
### MV1200 R EDM machine extra capabilities

- To help justify the investment, the MV1200 R machine can be used for machining of other parts and components

### EDM dress process advantages

- The process is clean – dressing is performed under water
- No dust or pollution -extraction is not required as with stand-alone dresser
- Environmentally friendly

For the Wire EDM dress process to work, the bond must be conductive. Resimet (hybrid bond of resin and metal) or any grinding wheel with metal in the bond can be Wire EDM dressed. When compared to conventional dressing, the MV1200 R Wire EDM machine dresses wheels with an open porous structure and extended grit protrusion- allowing the wheel to cut aggressively freer and increase grinding performance.



EDM dressed wheels use significantly lower spindle loads when grinding on ANCA machines



@ANCACNCMachines

[www.anca.com](http://www.anca.com)

**ANCA**  
CNC MACHINES